

## Checking USB Com Ports

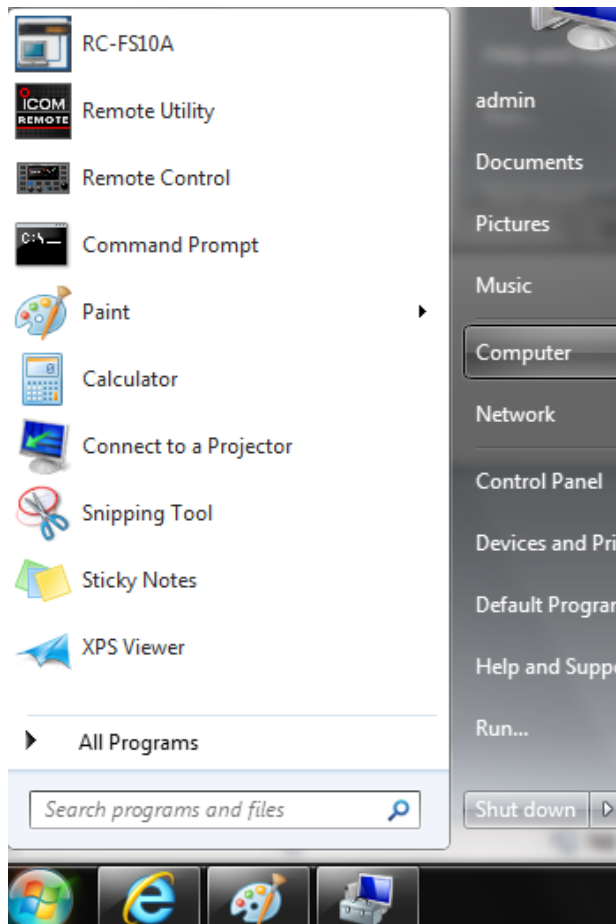
When you load USB cloning cable drivers, you may need to know what USB port has been assigned to your USB cable. The following paragraphs describe how to check your assigned USB Com ports in Windows 10, 8, Windows 7, and Windows XP.

### Checking USB Com Ports in Windows 10/7

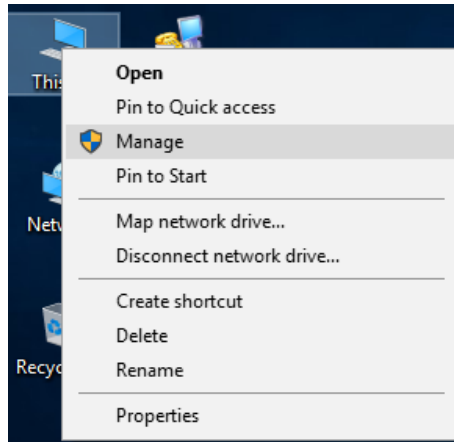
The following paragraphs describe how to check Com Ports through the Device Manager in Windows 7.

1. Click **Start** (Windows 7). For Windows 10, right-click on the **This PC** icon on the desktop.

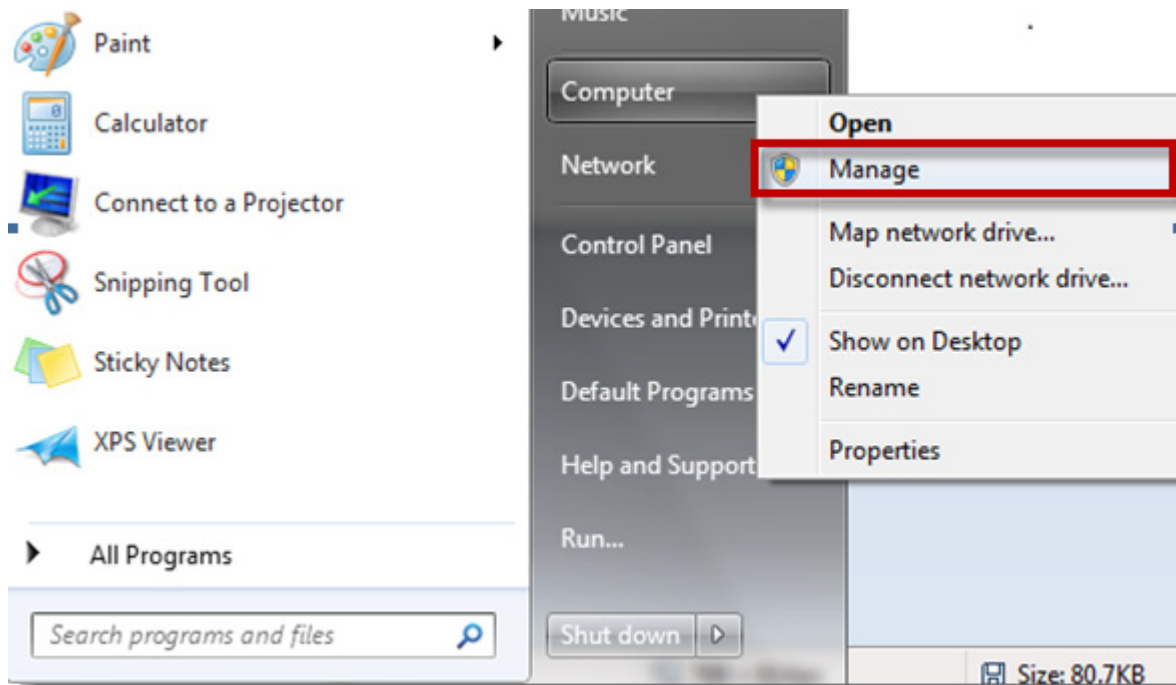
*Windows 7*



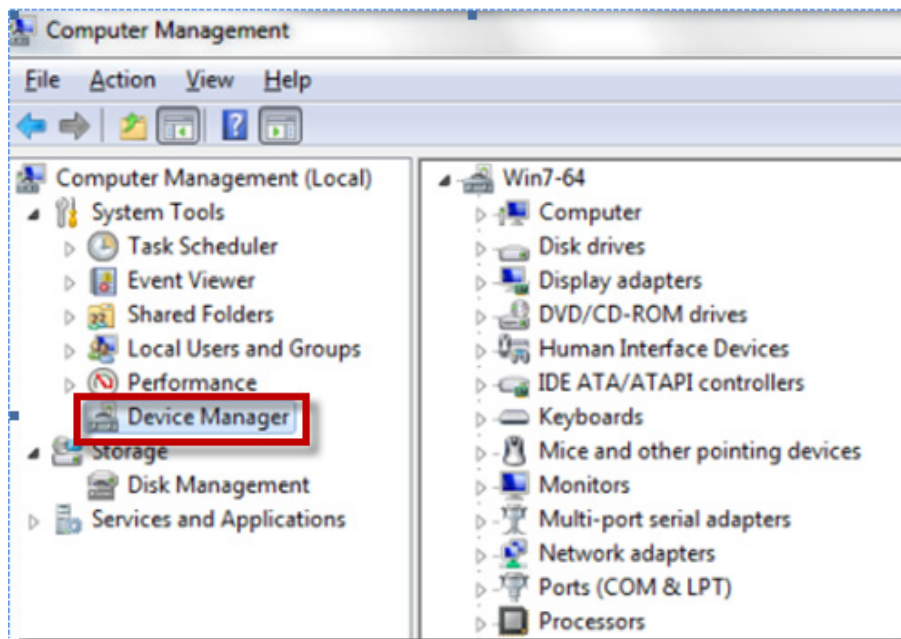
*Windows 10*



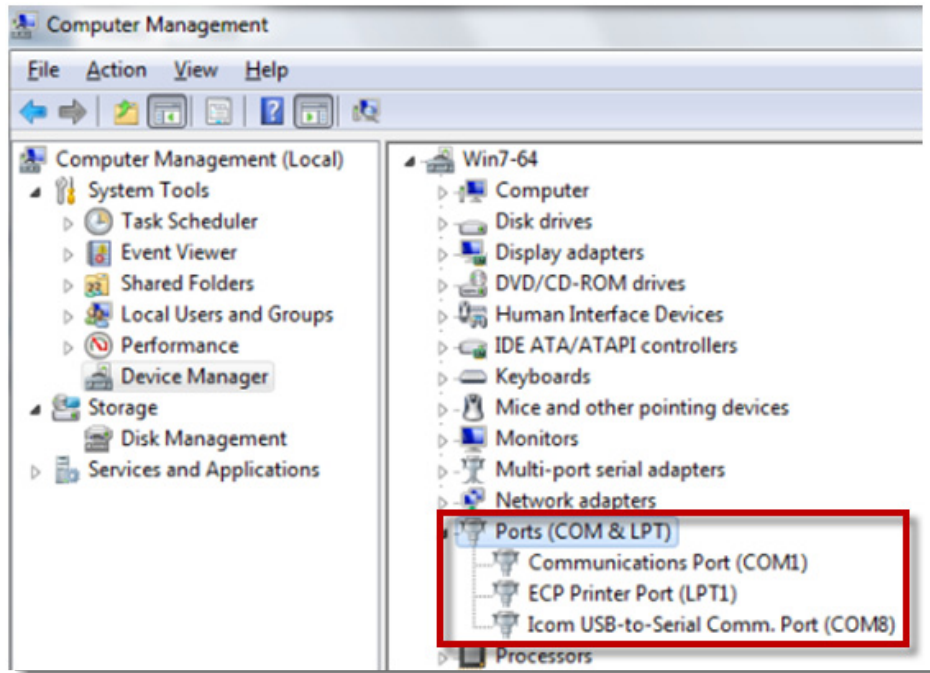
2. Right click **Computer** and select **Manage**.



3. Click **Device Manager**.



4. Double Click **Ports**.



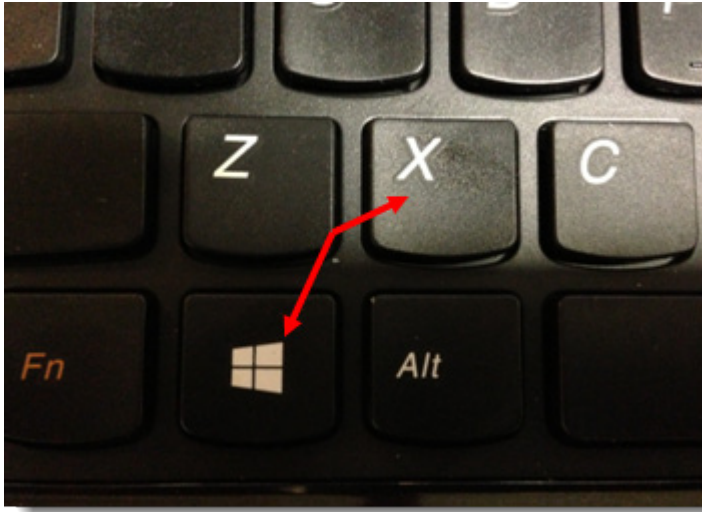
Your Icom USB cable port number will show under Ports (COM8 in the example above). You will need to enter this Com port number in the Radio's cloning software.

Note: If Icom USB to Serial doesn't come up under Ports, re-install the ICOM USB Drivers (downloadable from the Knowledge Base) or check your Cable.

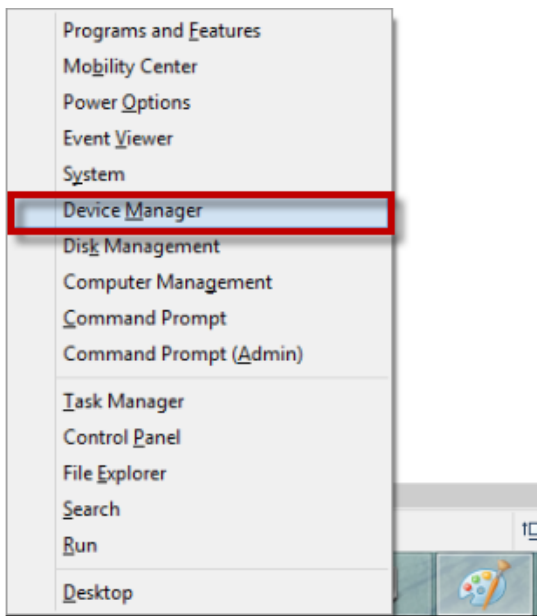
## Checking USB Com Ports in Windows 8

The following paragraphs describe how to check your assigned USB Com ports through the Device Manager in Windows<sup>®</sup> 8.

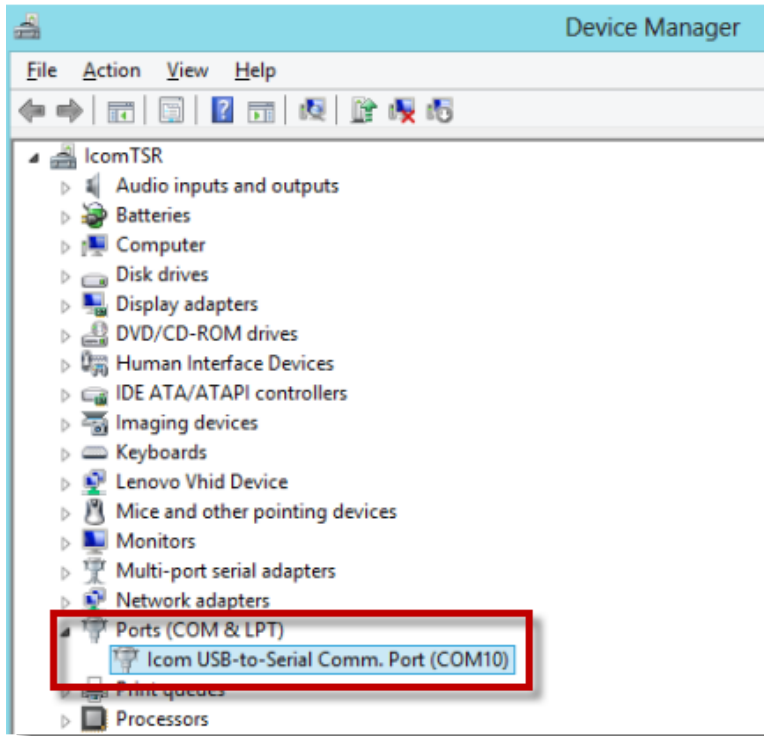
1. Press and hold the **WIN** Key then press the **X** key on your keyboard to bring up the Win X Menu.



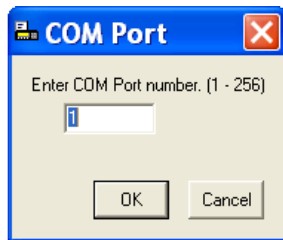
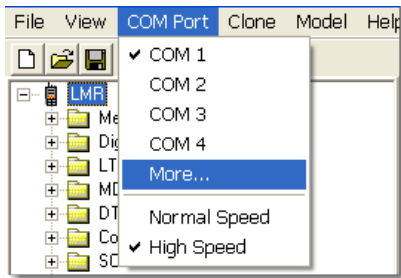
2. Access the Win X menu by holding down the Windows key then pressing X.
3. Click **Device Manager**.



4. Double Click **Ports**.



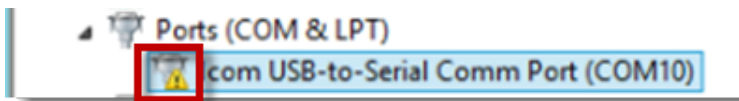
Your Icom USB cable port number will show under **Ports**. Enter the Com port number in the Radios cloning software.



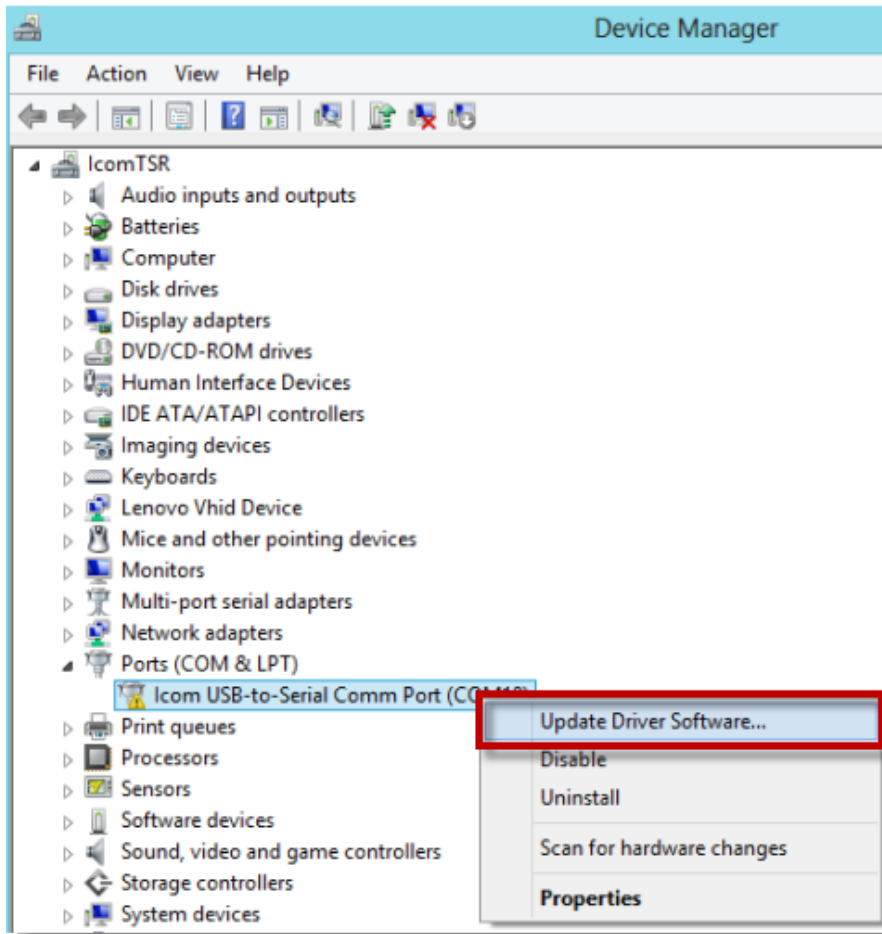
Note: If Icom USB to Serial doesn't show under Ports, re-install the ICOM USB Drivers (downloadable from the Knowledge Base) or check your Cable connection.

***If You See a Yellow Triangle on the COM Port Line***

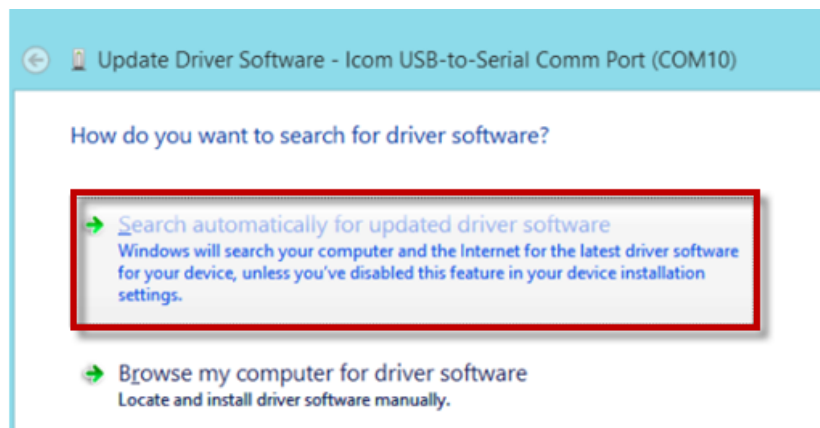
A small yellow triangle icon in front of the Com Port line can appear after Windows updates. If this occurs, the Com Port driver needs to be updated.

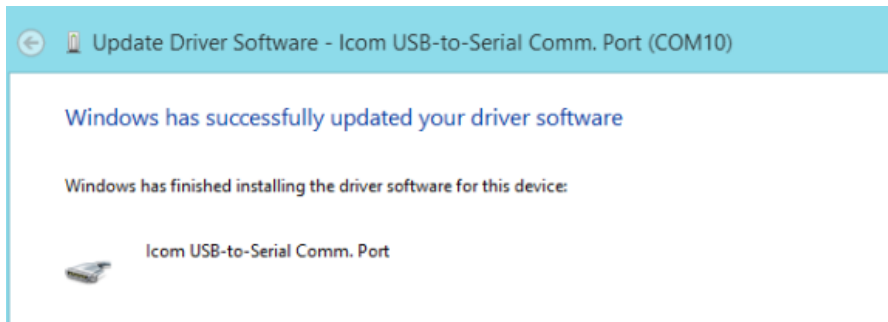
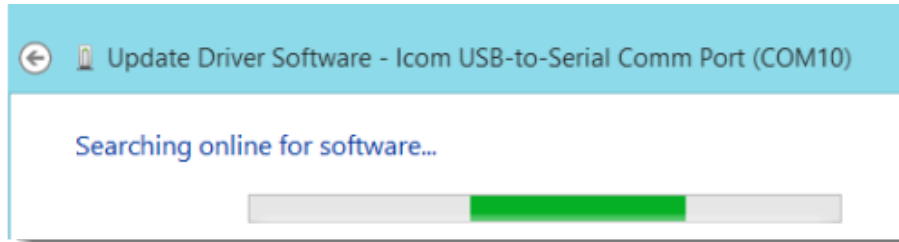


1. Right click on **Icom USB-to-Serial Comm. Port** and select **Update Driver Software...**

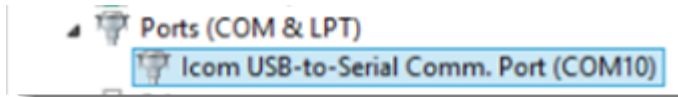


2. Click **Search automatically for updated driver software**.





Your Icom USB cable port number will now show under **Ports**. Enter this Com port number in the Radios cloning software.

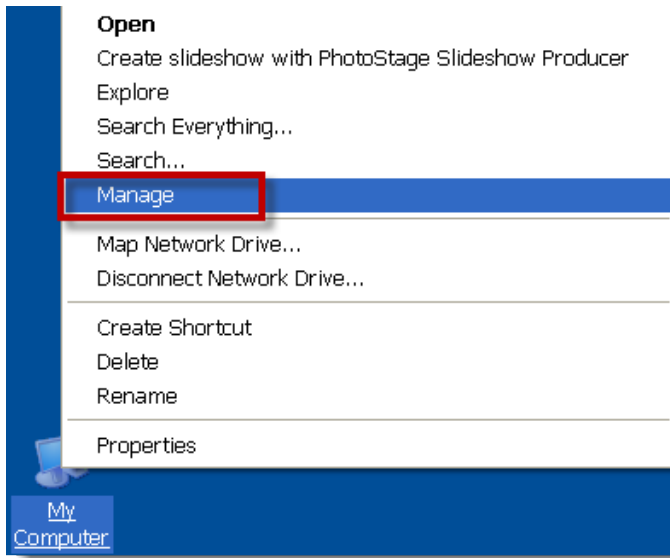


Note: If Icom USB to Serial doesn't come up under Ports, re-install the Icom USB Driver (downloadable from the Knowledge Base) or check your Cable connection.

## Checking USB Com Ports in XP

The following paragraphs describe how to check your assigned USB Com ports through the Device Manager in Windows XP.

1. Right click **My Computer** and select **Manage**.



2. Click **Device Manager** and select **Ports**. Your **USB Serial Port** will show in parenthesis.

