

### **3. How to change the cross band repeater function ON/OFF:**

A cross band repeater function can be operated when the following diode is installed.

- Install the diode **HD4** (1750000550 1SS355) on the DISPLAY board, as shown in the attached diagram **No.1** or **No.2**.

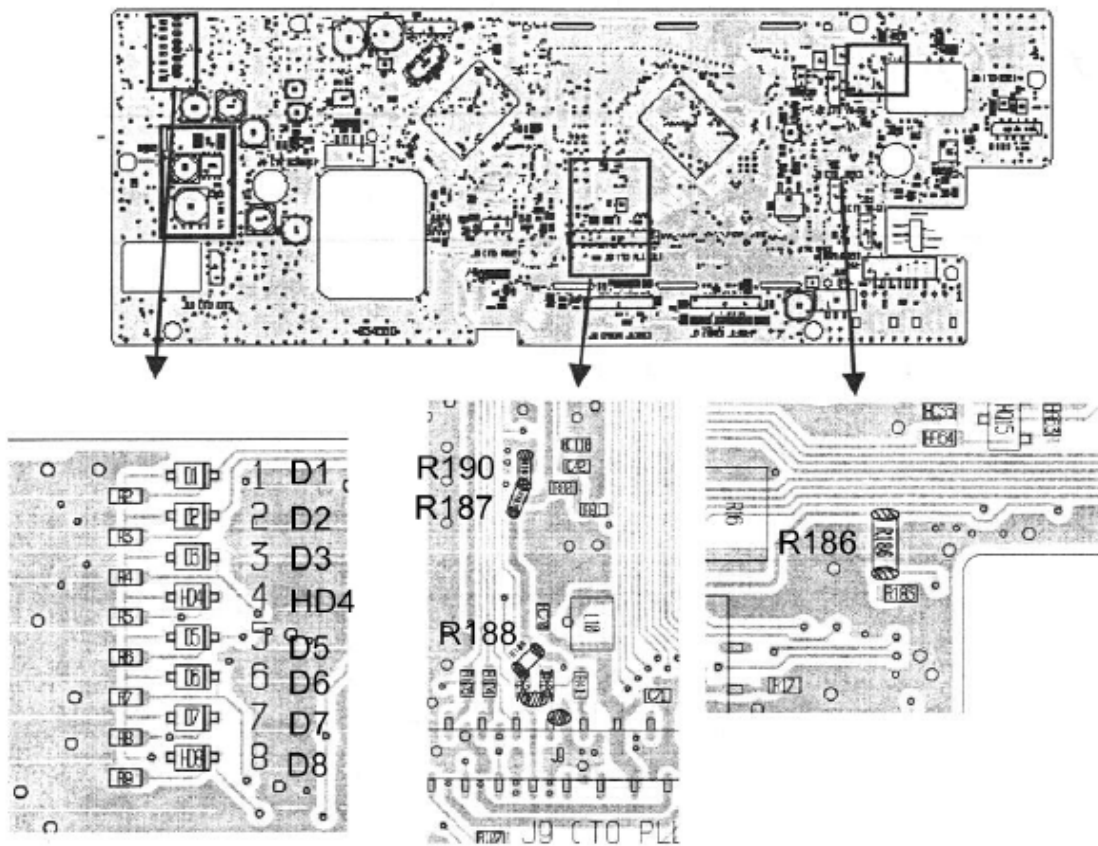
**The following steps are how to switch between the cross band repeater mode and normal mode:**

- (1) Make sure the lock function is ON before turning power OFF.
- (2) Push and hold down the M/S key while turning the power on.
- (3) Then enter to the cross band repeater mode. •• (Lock segment will flash while the cross band repeater function is on.)
- (4) Push lock key to turn the lock off to exit the cross band repeater mode.

#### **Note:**

The cross band repeater function cannot be cancelled even when the power is turned ON and OFF.

**Picture No.1 (B-5456D)**



**Picture No.2 (B-5456E or later number)**

